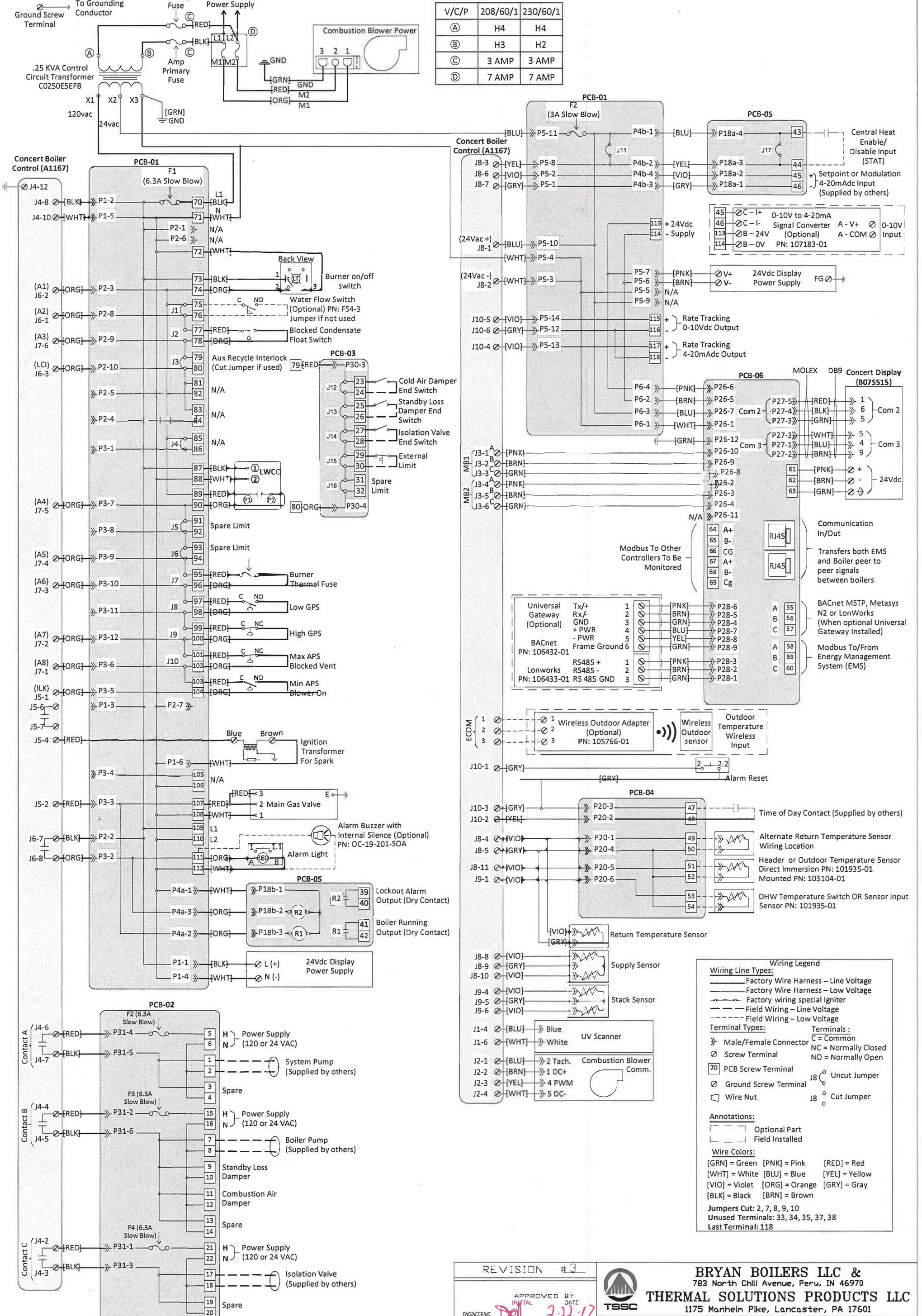


Boiler must be grounded in accordance with ANSI National Electric Code.

IMPORTANT: The wiring shown for devices supplied and installed by others is suggested only. Certification of, and responsibility for the correctness of the wiring is the responsibility of the supplier of these devices. Bryan Steam LLC accepts no responsibility for the correctness or safety or execution of this wiring or of the operation of such devices.

V/C/P	208/60/1	230/60/1
(A)	H4	H4
(B)	H3	H2
(C)	3 AMP	3 AMP
(D)	7 AMP	7 AMP



ORIGINAL

REVISION #3		BRYAN BOILERS LLC & 783 North Chili Avenue, Peru, IN 46970 THERMAL SOLUTIONS PRODUCTS LLC 1175 Manheim Pike, Lancaster, PA 17601
APPROVED BY: <i>[Signature]</i> 2-22-17 ENGINEERING MANAGER REVISED BY: <i>[Signature]</i> 2-22-17		
DWG. TITLE: ARCTIC 1500-3000 208-230V SINGLE PHASE WIRING DIAGRAM		DRAWN BY: BCH DATE: 02/03/17 SCALE: NONE DISK: FS DWG. NO.: WD-867